

## Quarry Life Award 5th Edition (2021) – Tanzania Programme

### 1. Preamble and Context

#### 1.1. General Background

Tanzania Portland Cement Public Limited Company (TPC PLC) is the largest cement producing company in Tanzania. It is part of Heidelberg Cement Group. It was established in 1966 with the principal activity of manufacturing and selling of cement. The company builds on three pillars of sustainable development: Economy, ecology and social responsibility. The company strives to preserve the natural environment thereby conserving resources, reducing emissions and minimizing the environmental impact of its operations. The company manufactures two brands of cement, Twiga Ordinary and Twiga Extra which are strictly conforming to the latest standards issued by Tanzania Bureau of Standards.

Since 2012, TPCPLC in collaboration with HeidelbergCement set itself the ambition to “Deliver a prominent positive contribution to biodiversity and to establish a leading position within the extractive industry in the development of biodiversity at our sites” through Quarry Life Award (QLA) initiative. This continues to be a strong component of the Company’s sustainability strategy as set out in the Sustainability Commitments 2030, and enables TPCPLC and HeidelbergCement to actively contribute to International Goals through mainstreaming and safeguarding biodiversity.

The 5<sup>th</sup> Edition of QLA aims at not only increasing our knowledge and understanding of biodiversity on our sites, but at improving the perception of TPCPLC and HeidelbergCement across all stakeholder groups. Three changes are being made for this latest edition: at national level only the 1st place winner for each stream (Research and community) are being financially rewarded (purchasing power of a total of €10,000); at international level there is a new category – Nature Based Solutions; and the international category ‘Student Class’ and public vote will be terminated.

#### 1.2. Objectives of the Quarry Life Award

- To increase the scientific understanding of the interaction between nature and quarries
- To develop new science-based biodiversity management recommendations applicable across our sites, and share these both externally and within our operations,
- To initiate dialogue between operations and communities / policy makers / NGOs
- To contribute to global nature conservation goals in raising the awareness of the importance of biodiversity and bringing people closer to nature.
- To ultimately improve the perception of HeidelbergCement across all stakeholder groups

**1.3. Updated concept for the 5th Edition 2021**

Given the positive feedback from the both the national coordinators and the participants during the 2018 contest the national level contest will continue to comprise two categories: research stream and community stream as elaborated in the Table below.

Stream	Targeted Projects	Targeted Participants
Research Stream	Scientific projects which increase knowledge of extraction ecology and / or lead to improved biodiversity / landscape / water management at TPCPLC / HC sites.	Academics, university students, topic specialists, and NGOs
Community Stream	Engagement and outreach projects which help the quarry / Group to connect with external stakeholders and / or raise awareness / educate about biodiversity in quarries	Open to all (individuals, middle schools and older, NGO's and local community) (no scientific background necessary)

**1.4. Awards**

At national level, 1<sup>st</sup> winners will be granted prizes of 5,000EUR for best projects in the research stream and community stream.

At international level, six categories independent from the two-stream competition at national level, will be awarded International level along with the Grand Prize winner. Categories each awarded 10.000€, are:

- Biodiversity management
- Habitat and species research
- Beyond Quarry Borders
- Biodiversity & education
- Connecting quarries and local communities
- Nature Based Solutions

And the overall winner is awarded: 30.000€

**2. The Participating Quarry in Tanzania**

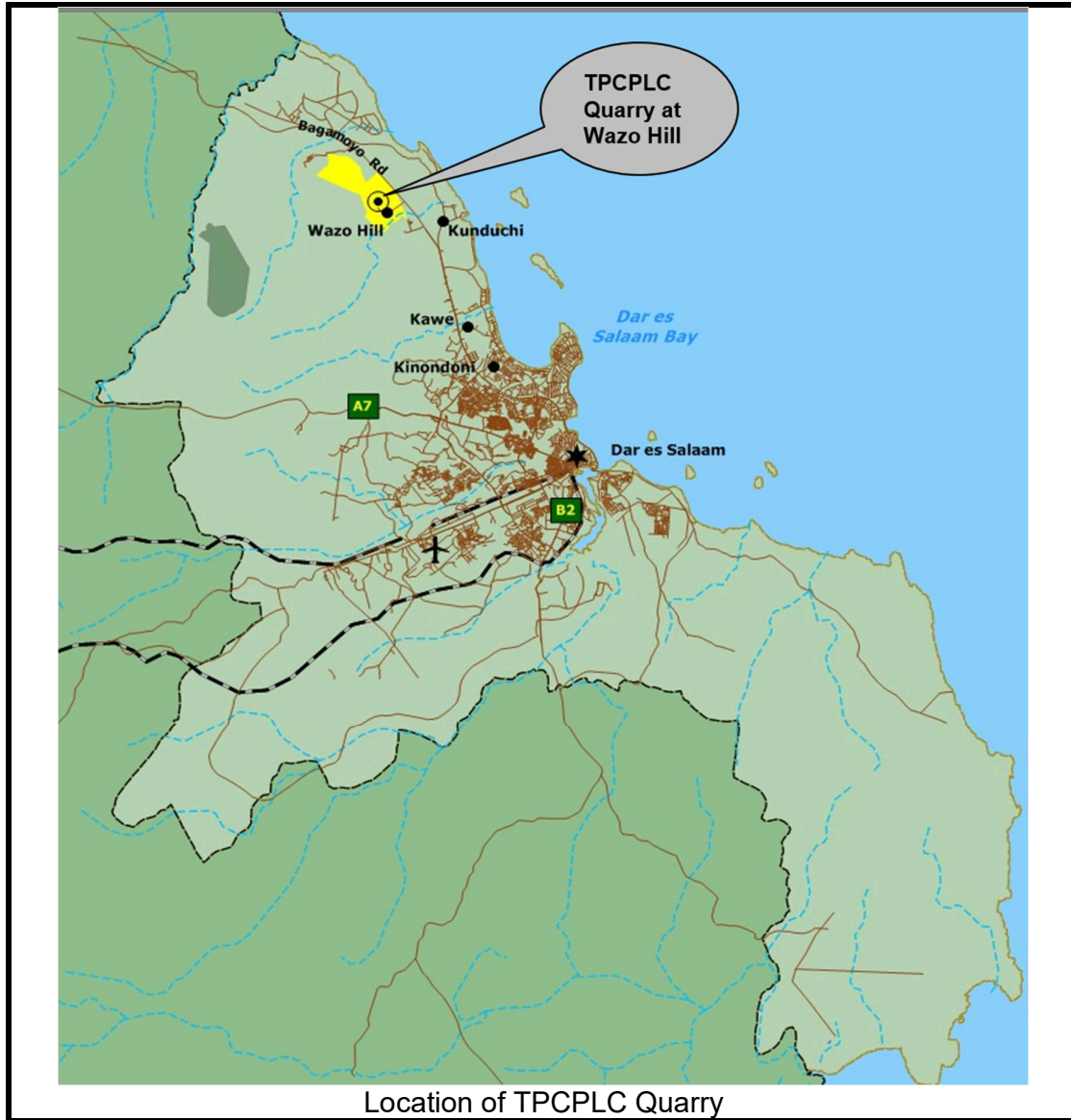
The cement extraction Wazo Hill Quarry based at TPCPLC (Twiga cement) is the participating quarry in Tanzania. Below is a brief explanation of the Quarry.

## 2.1 Quarry Description and Location

The Wazo Hill area with an elevation of approximately 100m above sea level is the highest fossil reef and it is one of the largest carbonate occurrences on the Tanzania coast. The quarried landscape looks barren while heaps of topsoil is deposited on the edges of mined blocks as source of materials for planned restoration. Water is pounding in depressions created by excavation works and undulations of the bottom of the quarry landscape. Mining activities included excavation of the overburden red soils and blasting of the underlying limestone rock. The red soil together with the topsoil which is rich in organic matter, grass and tree roots is removed and stockpiled as spoil material. The spoil material is kept along the edge of the quarried blocks for easy distribution during restoration phase. Remnants of large boulders can be seen over the quarry site.



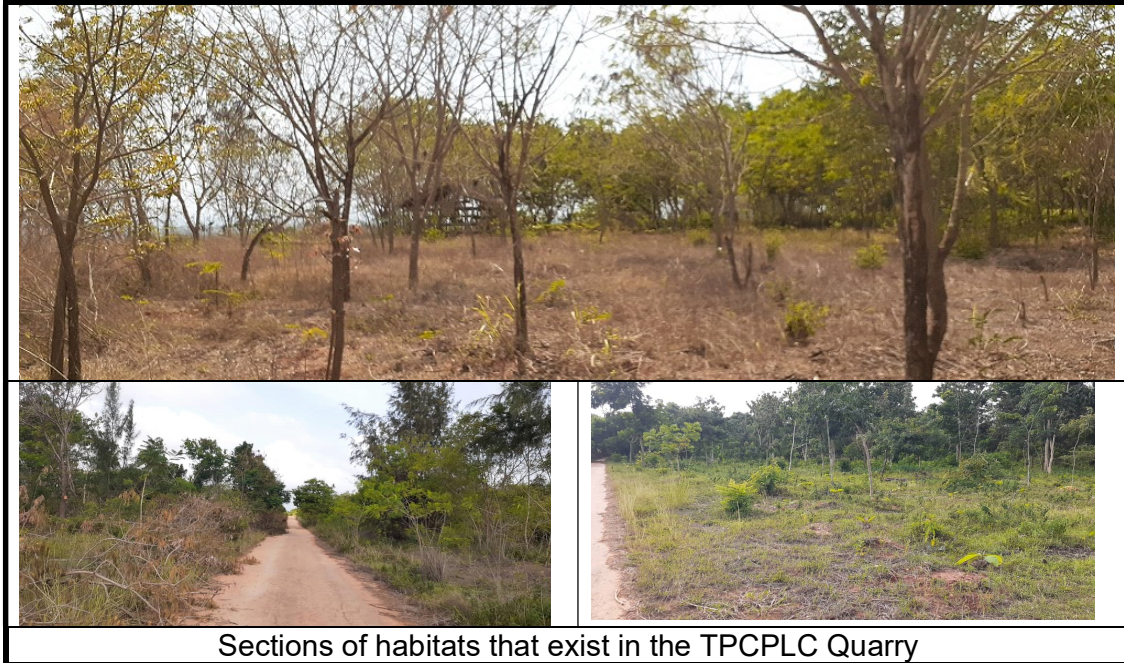
The quarry is located at Wazo Hill that is north-west of the Central Business District of Dar Es Salaam City, as indicated in Figure 1. The central coordinates of the site are 6°38'44.2" South and 39°09'26" East. The average site elevation is 100 metres above sea level. Administratively, the area is located in Wazo Ward, Kinondoni District, about 25 km north of the Dar Es Salaam City. The rich rock material extends for about 2.5 km parallel to Dar es Salaam- Bagamoyo Road.



**2.2. Habitats, flora & fauna description:**

Few trees such as baobab have been left untouched for protection and aesthetic reasons. The ongoing quarry rehabilitation and renaturation (through trees and grasses planting and caring) is attracting various species of flora (more than 50 species of exotic and indigenous trees) and fauna including birds, reptiles, amphibia, small mammals, insects and butterflies. The scattered heaps of topsoil have attracted invasion of exotic trees species such as *Leucaena leucocephala* particularly along the quarry boundary and edges. Water ponds formed in depressions after removal of limestone rock and as part of rehabilitation work are attracting animals.





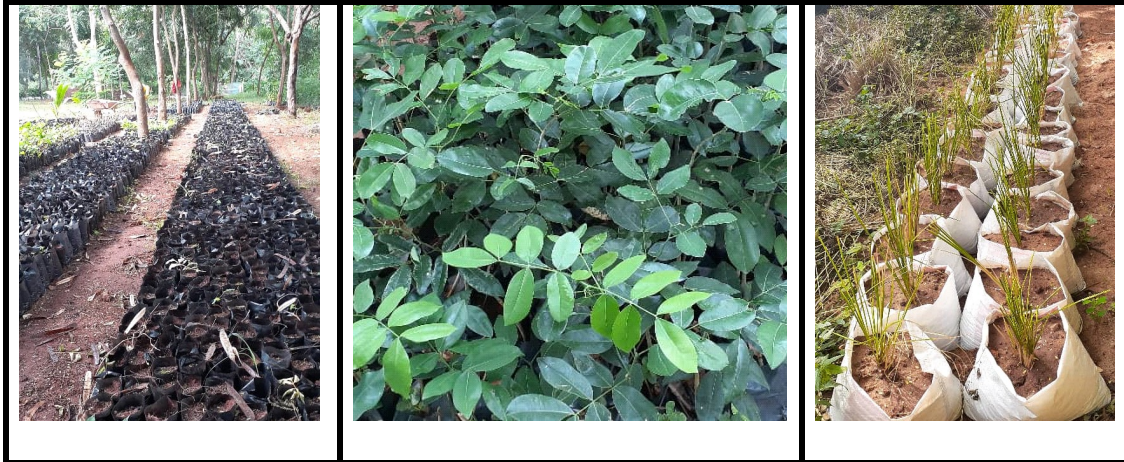
### 2.3. Ongoing nature projects

A section of TPCC quarry (more than 18Ha) has been rehabilitated and the conservation work is ongoing. The initiative is implemented through TPCC Quarry Rehabilitation and Renaturation Project which commenced in 2010. Among other activities, the project was designed to accommodate a tree nursery thereby accomplishing proper selection, raising, planting and caring for trees of various indigenous and exotic species and vegetation. The rehabilitated land therefore looks like a tree park accommodating a combination of planted and naturally regenerating trees, bushes and grasses. Other ongoing environmental protection activities includes:

- Supporting greening activities to schools and communities surrounding TPCPLC
- Environmental awareness / training for schools & communities
- Supporting urban forestry initiatives as well as capacity building







### 3. Timing for the 5th Edition

The entire period for the Quarry Life Award implementation in Tanzania is from May 2021 to November 2022 as elaborated in the Table below.

Timing	Milestone
11 <sup>th</sup> May -17 <sup>th</sup> November 2021	Promotion, Registration and Quarry visits
18 <sup>th</sup> November 2021	Proposals registration deadline
16 <sup>th</sup> December 2021	Proposal selection by national juries and communication to all participants
January - September 2022	Project research work period
15 <sup>th</sup> September 2022	Final project reports deadline
October - November 2022	National Winners
November 2022	National Ceremony
December 2022	International Ceremony

### 4. More Details and Contact Information

More information about this contest is available in the attached Quarry Life Award 5<sup>th</sup> Edition Concept and in website <https://www.quarrylifeaward.com/about/how-participate>

Also, more information about the contest and for those who would wish to visit the quarry during proposal development kindly contact the details below.

<b>Company:</b>	Tanzania Portland Cement Company Limited (TPCC) Wazo Hill, P.O. Box 1950, Dar es Salaam, Tanzania Telephone: +255-22-2630130, Fax: +255-22-2630139 Email: <a href="mailto:info@twigacement.com">info@twigacement.com</a>
<b>Contact Person and Details:</b>	Richard Magoda, Environmental Manager. Mr. Mobile: +255 (0) 785670712 <a href="mailto:richard.magoda@twigacement.com">richard.magoda@twigacement.com</a>



HEIDELBERGCEMENT